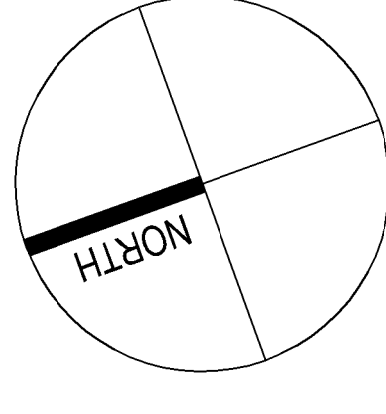


OPEN SPACE	sqm	CAR PARKING SPACES REQUIRED
AREA 1	1663	87 UNITS OVER 3 BED. x 2 CAR PARKING SP
AREA 2	235	51 UNITS 2 BED. x 1 CAR PARKING SPACE
AREA 3	228	14 UNITS 1 BED. x 1 CAR PARKING SPACE
AREA 4	408	+ 1 CAR PARKING SPACE/ 5 1 AND 2 BED.
AREA 5	80	TOTAL CARPARK SPACES REQUIRED
AREA 6	1642	
AREA 7	850	TOTAL CARPARK SPACES PROVIDED
AREA 8	2520	(INCLUDING ELECTRIC AND DISABLED CAR PARKING SPACES)
TOTAL OPEN SPACE AREA	7626	ELECTRIC CAR PARKING SPACES 15
TOTAL SITE AREA	50610	DISABLED CAR PARKING SPACES 3

LEGEND: SITE PLAN

- Planning Extent Boundary
- Asphalt to carriageways generally
- Open Space
- Soft landscaping
- Cycling Lane
- Footpath
- Proposed Location for potential future provision of EV charging station

- Proposed New Tree
- Existing Tree/Hedge to be Retained
- Existing Tree/ Hedge row to be Removed



CAR PARKING SPACES (WEST SECTION) = 136 PROVIDED/ 132 REQUIRED

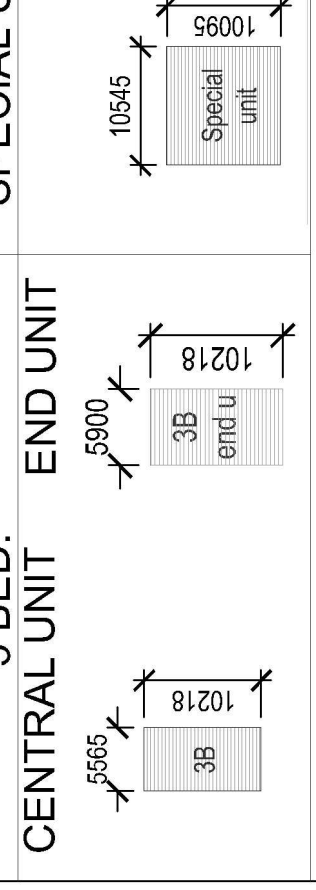
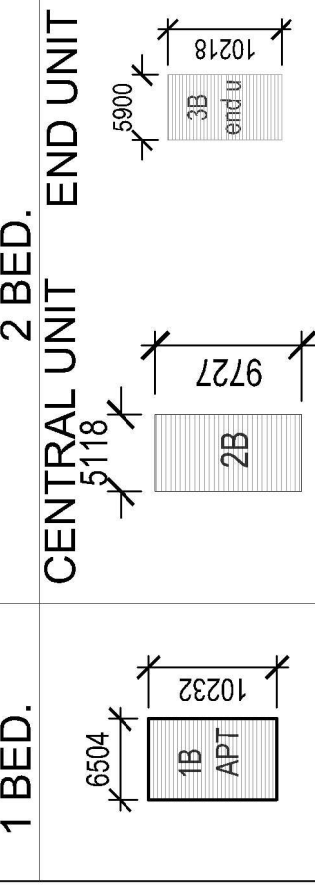
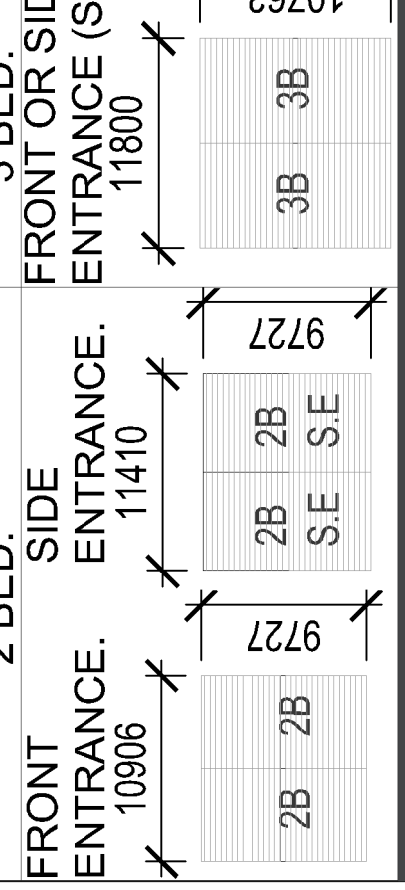
CAR PARKING SPACES (EAST SECTION) = 129 PROVIDED/ 120 REQUIRED

- GENERAL NOTES**
- DO NOT SCALE. USE FIGURED DIMENSIONS ONLY.
 - THIS DRAWING IS TO BE READ IN CONJUNCTION WITH THE PROJECT SPECIFICATIONS AND DRAWINGS.
 - ALL DIMENSIONS TO BE CHECKED ON SITE.
 - THE CONTRACTOR SHALL VERIFY ALL DIMENSIONS BETWEEN DRAWINGS. DISCREPANCIES TO INFORM THE ARCHITECT IMMEDIATELY.

ORNAMANCE SURVEY (IRELAND) LICENSE NO. AP/040219
 ORNAMANCE SURVEY (IRELAND) LICENSE NO. AP/040219
 ORNAMANCE SURVEY MAP SHEET NO. 3303-19 | 3303-20 | 3303-21 | 3303-22
 LEVELS BASED ON OS DATUM (MALD HEAD)

BEDS	SOCIAL	AFFORD.	TOTAL
1 BED.	14	-	14
2 BED.	39	12	51
4 BED. SPECIAL	2	-	2
3 BED.	25	60	85
TOTAL	80	72	152
	53%	47%	100%

HOUSE PLOT AREA



O'Connell Mahon Architects

9 FITZWILLIAM PLACE
 DUBLIN 2, IRELAND
 T +353 1 676 7408
 info@oconnellmahon.ie
 www.oconnellmahon.ie

CLIENT
 WICKLOW COUNTY COUNCIL

PROJECT
 LOTT LANE HOUSING

DRAWING TITLE
 PROPOSED SITE PLAN

DISCIPLINE ARCHITECT
ARCHITECT SLMP/LBV
SCALE @ A1 1:500
DATE MAY 2023

PROJECT NUMBER A3 - PLANNING
STATUS A3 - PLANNING
DRAWING NUMBER WCC-OCMA-ZZ-00-DR-A-2001
REVISION C03

PART 8 ISSUED